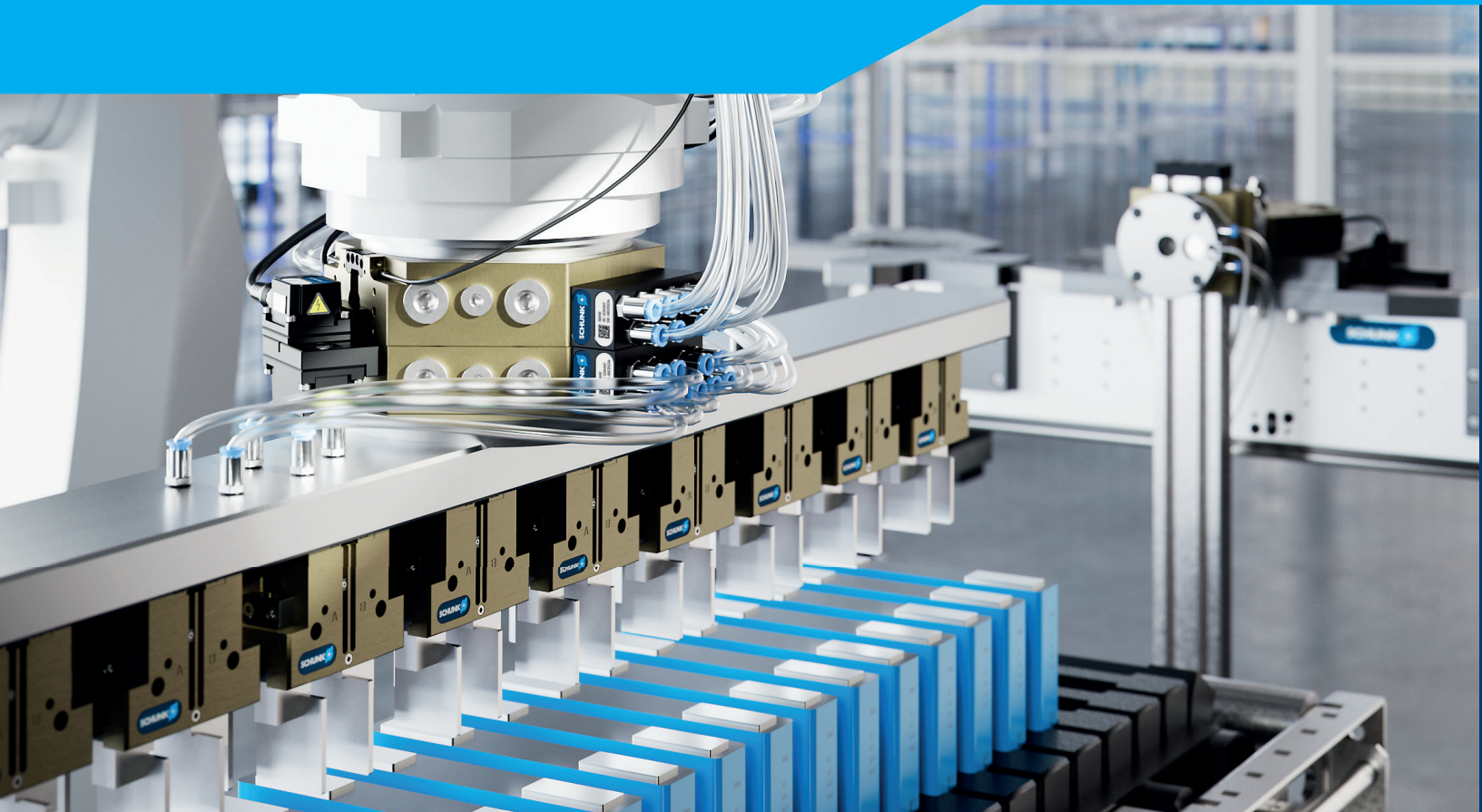




Robot+PLUS Automatic tool changer CPB

Flexible. Compact. Future-proof.

Hand in hand for tomorrow

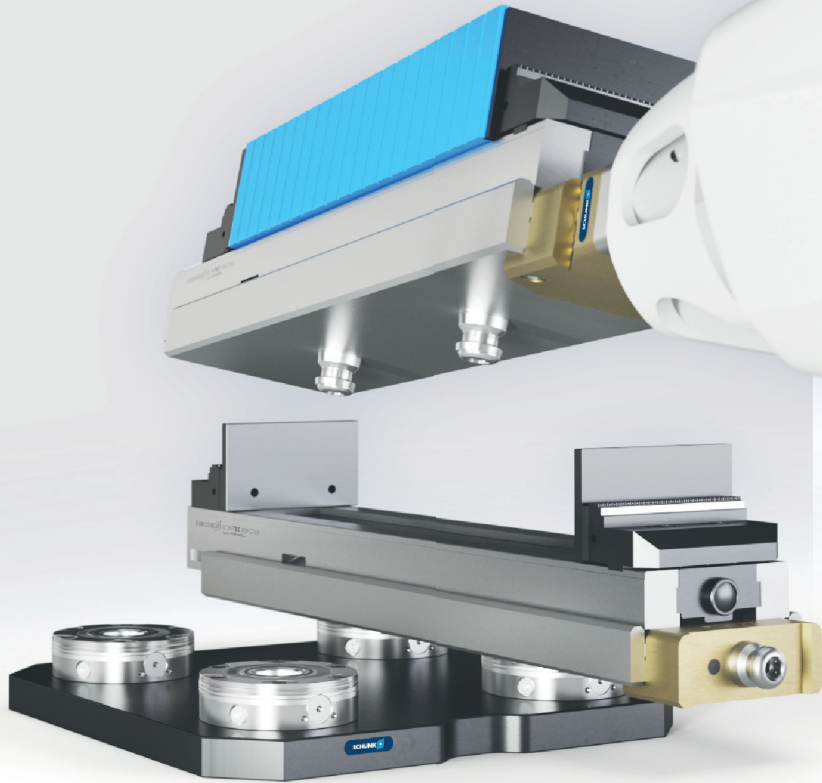


Automatic tool changer CPB

The CPB, consisting of a change master and change adapter, offers maximum flexibility and process reliability. Its robust locking mechanism and versatile media transfer enables efficient tool changes, reduces downtime, and boosts the productivity of your system.

Your added value:

- + Proven locking technology**
The positive-locking, self-retaining bold mechanism made of vacuum-hardened stainless steel, provides maximum stability and durability
- + Integrated energy supply**
Pneumatic feed-throughs ensure a reliable supply of tools and are also suitable for vacuum transmission
- + Easy assembly**
The integrated ISO interfaces on the robot and the tool side allow quick assembly and reduce the effort during commissioning



Discover unmatched flexibility

Versatile media transfer

A broad range of signal, pneumatic, fluid, and communication modules expand the application options of the tool changer

Maximum operational safety

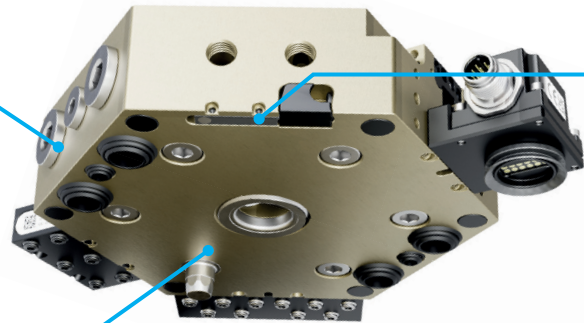
The self-retaining locking system with integrated spring provides reliable coupling, even in case of an unexpected pressure drop

Process-reliable sensor scanning

Optionally available sensors check the locking status and the presence of end effectors

Improved option modules

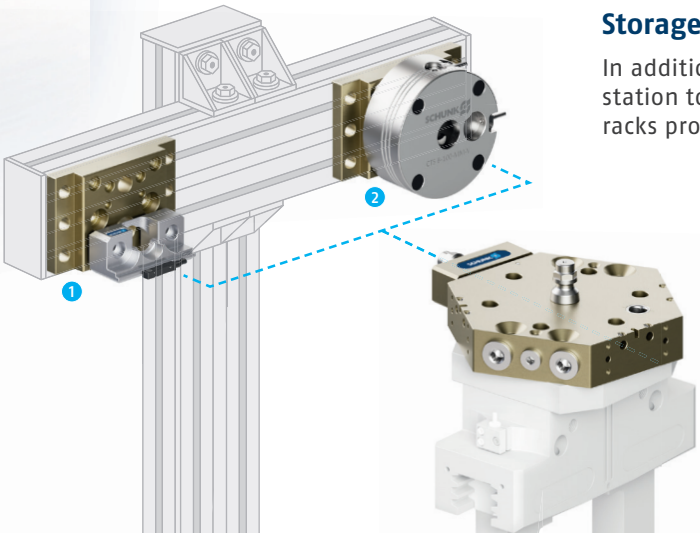
Thanks to the integrated pin interface, the modules are easy to attach and convince with their low interfering contours



Storage rack CTS-B

In addition to the automatic tool change, the robot requires a storage station to securely deposit tools for the change process. The CTS-B storage racks provide stability and flexibility.

- 1 Passive variant**
In order to securely store the tool, the storage module is controlled with a starting angle of 10°
- 2 Active variant**
The tool is linearly inserted into the storage module and securely stored after locking



Over 20 years of experience in stationary workholding

The bold mechanism of the CPB is based on more than 20 years of experience in stationary workholding and convinces through maximum stability and a durability.

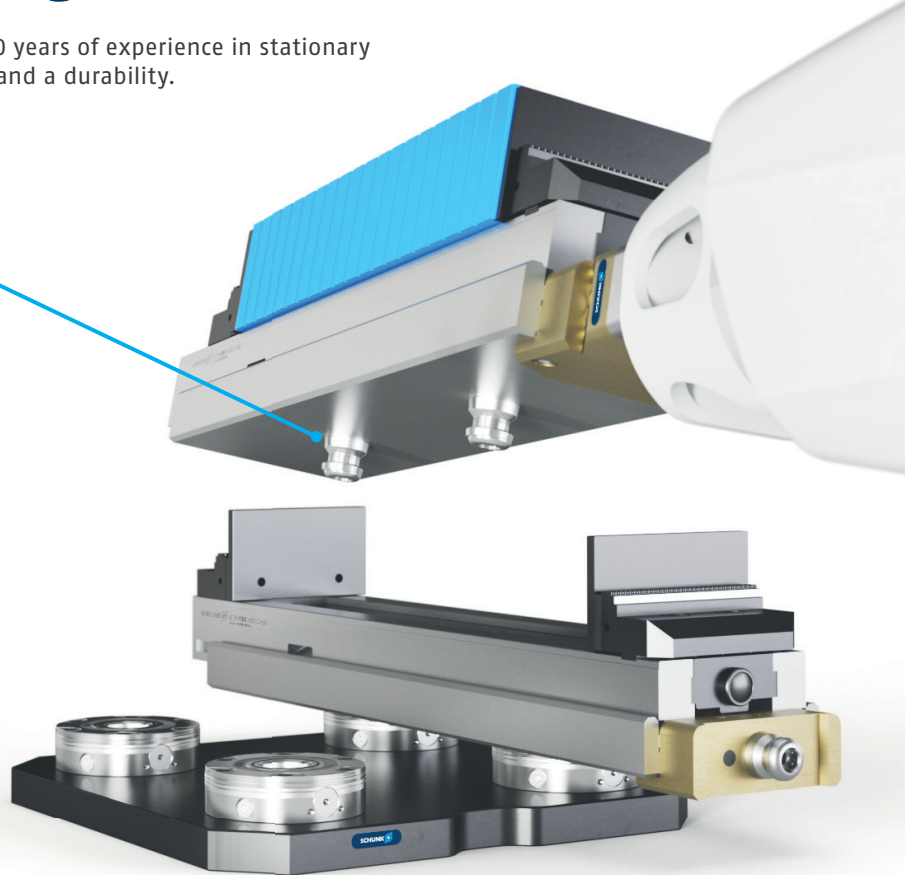
Clamping pin

Allows easy joining behavior with high repeat accuracy. It ensures fast and reliable joining even with inclination angles or mismatch.

Interested?

Discover the flexibility and reliability of the CPB and let our experts support you regarding your application! Feel free to contact us.

Tel.: +31 73 644 1779
info@nl.schunk.com



SCHUNK Intec B.V.
Spantechiek
Grijptechiekt
Automatiseringstechniek

Titaniumlaan 14
5221 CK 's-Hertogenbosch
Nederland
Tel. +31 73 644 1779
info@nl.schunk.com
schunk.com

Follow us

